

## 16" Light Cross Section Elematic Hollow Core Plank

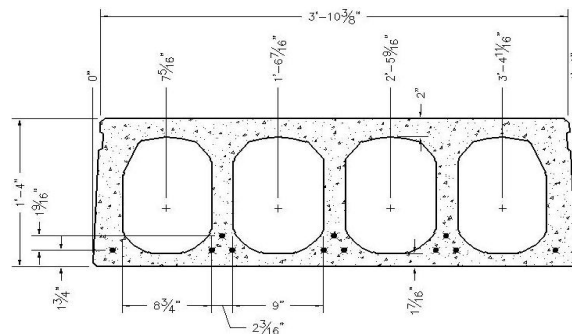
**Load Table** Maximum Uniformly Distributed Load (psf)

Strand Pattern	Strand Area(in <sup>2</sup> )	Clear Span (Feet)											
		38	40	42	44	46	48	50	52	54	56	58	60
16S7.6(48)-2.13	2.131	194	180	168	157	147	138	130	122	115	108	102	96
16S4.6(68)-2.02	1.786	187	174	163	152	142	133	125	117	110	104	92	79
16S4.6(48)-1.75	1.480	181	168	157	147	137	128	120	111	96	83	71	-
16S88-1.75	1.224	177	164	153	143	125	109	94	-	-	-	-	-

**Estimated Camber at Time of Erection (inches)**

Strand Pattern	Strand Area(in <sup>2</sup> )	Clear Span (Feet)											
		38	40	42	44	46	48	50	52	54	56	58	60
16S7.6(48)-2.13	2.131	1.45	1.52	1.59	1.63	1.66	1.66	1.64	1.59	1.51	1.40	1.25	1.05
16S4.6(68)-2.02	1.786	1.14	1.18	1.20	1.21	1.20	1.16	1.10	1.01	0.88	0.72	0.52	0.27
16S4.6(48)-1.75	1.480	0.89	0.90	0.90	0.88	0.83	0.76	0.67	0.54	0.38	0.18	-0.06	-
16S88-1.75	1.224	0.62	0.60	0.57	0.51	0.43	0.33	0.19	-	-	-	-	-

$A_c = 349 \text{ in}^2$   
 $b_w = 11.69 \text{ in}$   
 $I_g = 11401 \text{ in}^4$   
 $y_b = 8.3 \text{ in}$   
 $w_t = 92 \text{ psf}$   
 $f'_{ci} = 5000 \text{ psi}$   
 $f'_c = 9000 \text{ psi}$   
 $f_{pu} = 270 \text{ ksi}$



**Notes:**

1. Tabulated safe uniform distributed loads in this table are based on ACI 318-02/318R-02.
2. All calculated loads are considered as superimposed live load based on 1.2DL + 1.6LL.
3. Topping weight is not included in tabulated values. Size and location of openings may effect table capacity.
4. All prestressing strand is stressed to 65% of  $f_{pu}$  typical unless noted otherwise.
5. Tabulated loads in the shaded region have live load deflections greater than  $L/360$ .
6. Plank is 1 hour fire rated per IBC 2003. For higher ratings please contact KP.
7. For longer spans or conditions not covered by this table please contact KP.

Issue date: 8/10/07