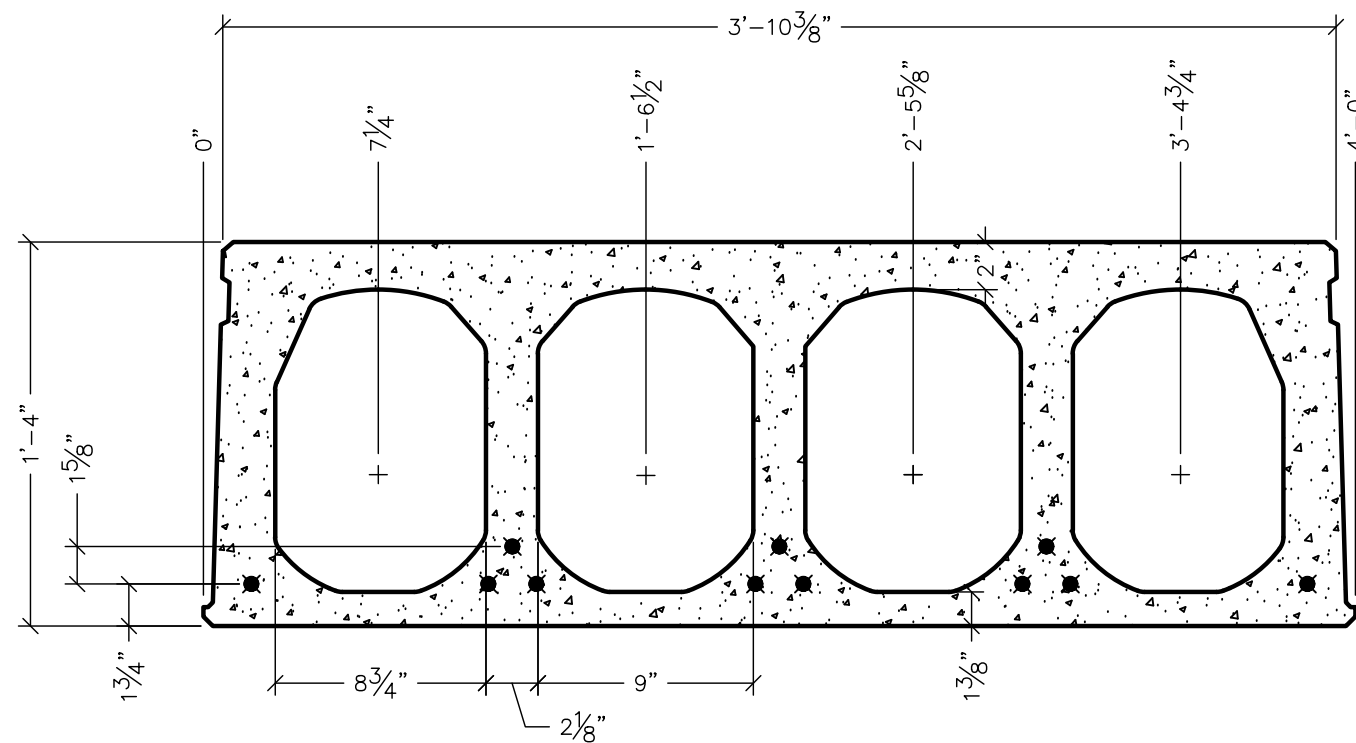


Maximum Uniformly Distributed Service Load (psf)
Clear Span (Feet)

Strand Pattern	Strand Area(in ²)	Clear Span (Feet)																																			
		30	31	32	33	34	35	36	37	38	39	40	41	42	43	44	45	46	47	48	49	50	51	52	53	54	55	56	57	58	59	60	61	62	63	64	65
16S7.6(48)-2.13	2.131	212	202	193	185	177	170	163	156	150	144	138	133	128	123	119	114	110	106	102	99	95	92	88	85	82	79	77	74	71	69	66	64	62	60	57	55
16S4.6(68)-2.02	1.786	218	209	199	191	183	175	168	161	155	149	143	138	133	128	123	119	114	110	106	103	99	95	92	89	86	83	80	77	75	72	70	67	-	-	-	-
16S4.6(48)-1.75	1.480	214	204	195	187	179	171	164	158	152	146	140	135	130	125	120	116	111	107	104	100	96	93	90	86	83	80	78	-	-	-	-	-	-	-	-	
16S88-1.75	1.224	235	225	215	206	197	189	182	175	168	162	156	150	144	139	134	129	124	115	108	100	93	87	-	-	-	-	-	-	-	-	-	-	-	-	-	-
0	0.000	-	-	-	-	-	-	-	-	-	-	-	-	-	-	-	-	-	-	-	-	-	-	-	-	-	-	-	-	-	-	-	-	-	-	-	-

Estimated Camber at Time of Erection (inches)
Clear Span (Feet)

Strand Pattern	Strand Area(in ²)	Clear Span (Feet)																																			
		30	31	32	33	34	35	36	37	38	39	40	41	42	43	44	45	46	47	48	49	50	51	52	53	54	55	56	57	58	59	60	61	62	63	64	65
16S7.6(48)-2.13	2.131	1.00	1.05	1.10	1.14	1.19	1.23	1.28	1.32	1.35	1.39	1.42	1.45	1.47	1.49	1.51	1.52	1.53	1.53	1.52	1.51	1.50	1.47	1.44	1.40	1.36	1.30	1.24	1.16	1.08	0.99	0.88	0.77	0.64	0.50	0.35	0.19
16S4.6(68)-2.02	1.786	0.82	0.85	0.89	0.92	0.96	0.99	1.01	1.04	1.06	1.08	1.10	1.11	1.11	1.12	1.12	1.11	1.10	1.08	1.06	1.03	0.99	0.95	0.89	0.83	0.76	0.69	0.60	0.51	0.40	0.28	0.15	0.02	-	-	-	-
16S4.6(48)-1.75	1.48	0.67	0.70	0.72	0.75	0.77	0.79	0.80	0.82	0.83	0.83	0.84	0.84	0.83	0.82	0.80	0.78	0.76	0.72	0.68	0.64	0.59	0.52	0.46	0.38	0.29	0.20	0.09	-	-	-	-	-	-	-	-	
16S88-1.75	1.224	0.51	0.53	0.54	0.56	0.57	0.57	0.58	0.58	0.57	0.57	0.56	0.54	0.52	0.49	0.46	0.43	0.38	0.34	0.28	0.22	0.15	0.07	-	-	-	-	-	-	-	-	-	-	-	-	-	-
0	0	-	-	-	-	-	-	-	-	-	-	-	-	-	-	-	-	-	-	-	-	-	-	-	-	-	-	-	-	-	-	-	-	-	-	-	-



PROPERTIES

- A_c = 349 SQ. IN.
- I_g = 11401 IN.⁴
- Y_b = 8.3 IN.
- b_w = 11.69 IN.
- w_t = 94 psf
- f'_{ci} = 5000psi
- f'_c = 9000psi
- f_{pu} = 270 ksi LOW LAX

NOTES:

1. TABULATED SAFE UNIFORM DISTRIBUTED LOADS IN THIS TABLE ARE BASED ON ACI 318-11/318R-02.
2. ALL CALCULATED LOADS ARE CONSIDERED AS SUPERIMPOSED LIVE LOAD BASED ON 1.2DL + 1.6LL.
3. TOPPING WEIGHT IS NOT INCLUDED IN TABULATED VALUES. SIZE AND LOCATION OF OPENINGS REDUCE TABLE CAPACITY.
4. ALL PRESTRESSING STRAND IS STRESSED TO 60-70% OF FPU TYPICAL.
5. TABULATED LOADS IN THE SHADED REGION HAVE LIVE LOAD DEFLECTIONS GREATER THAN L/360.
6. PLANK IS 1.5 HOUR FIRE RATED PER PCI MNL-124. FOR HIGHER RATINGS PLEASE CONTACT KP.
7. FOR LONGER SPANS OR CONDITIONS NOT COVERED BY THIS TABLE PLEASE CONTACT KP.
8. LOADS TO THE LEFT OF THE HEAVY LINE ARE GOVERNED BY SHEAR CAPACITY.