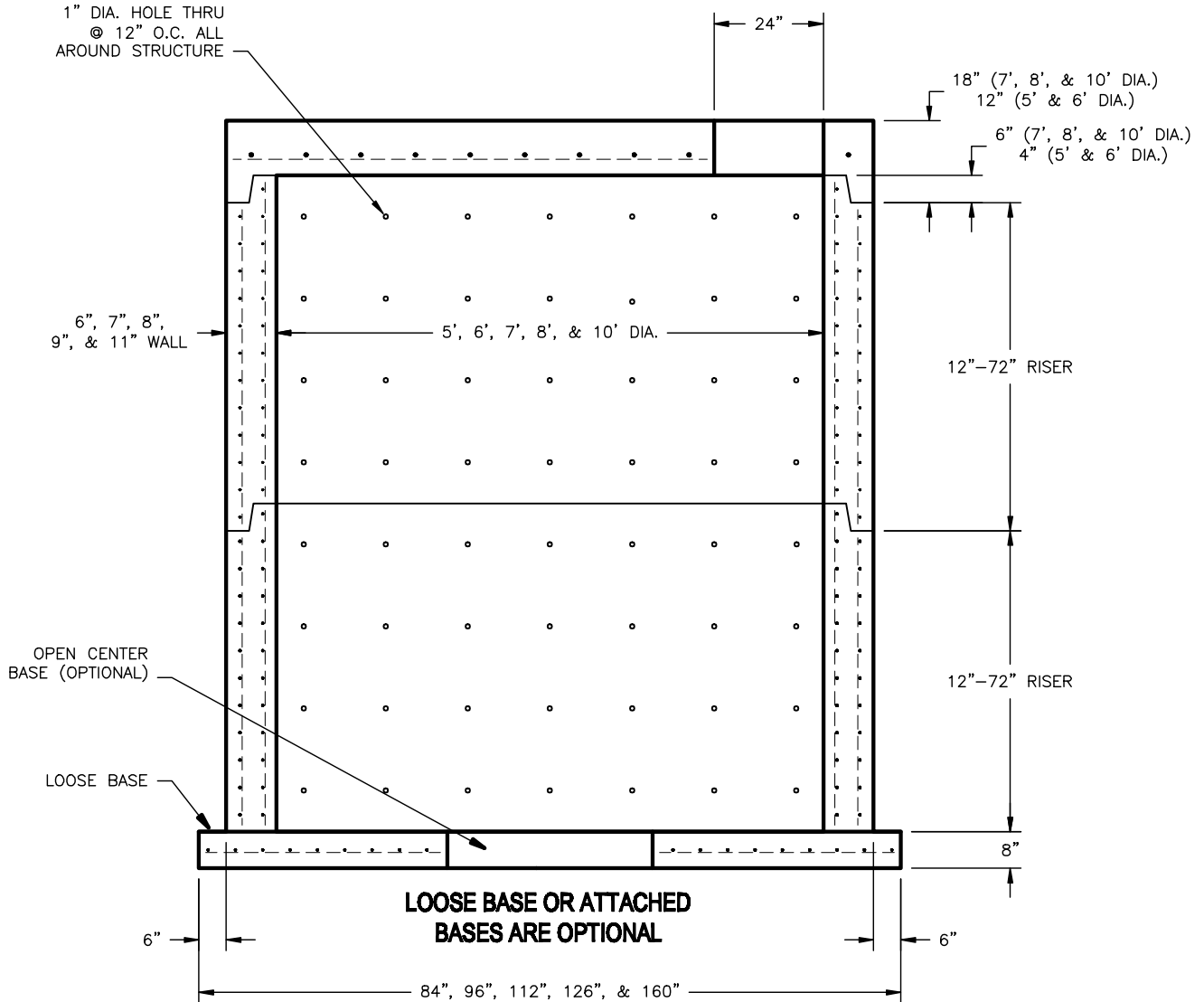




- 5' DIA. MANHOLE (6" WALLS & 84" O.D. BASE)
- 6' DIA. MANHOLE (7" WALLS & 96" O.D. BASE)
- 7' DIA. MANHOLE (8" WALLS & 112" O.D. BASE)
- 8' DIA. MANHOLE (9" WALLS & 126" O.D. BASE)
- 10' DIA. MANHOLE (11" WALLS & 160" O.D. BASE)



STEPS @ 16" O.C.
ARE OPTIONAL

CONFORMS TO ASTM C-478

 <p>3373 Busch Drive, Grandville, Michigan 49418 616.224.6176 616.224.2661 www.kerkstra.com</p> 	ENG:	60", 72", 84", 96", & 120" DIA. LEECHING MANHOLES W/ FLAT TOP	
	PLANT:		
	FIELD:		
	PRES:	DATE:	FILE NAME:
		7/2/07	