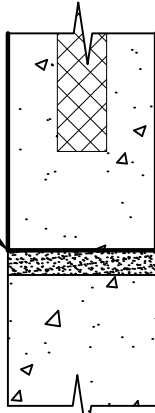


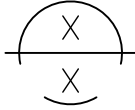
- #1  
 NON-SHRINK NON-METALIC GROUT  
 - EXT. JOINT LOOKS POOR.  
 - NOT CONSISTENT COLOR

NON-SHRINK NON-METALIC GROUT STIKE OFF FULSH WITH FACE OF PANEL.

1 1/2" ±



C.I.P. WALL  
(BY OTHERS)



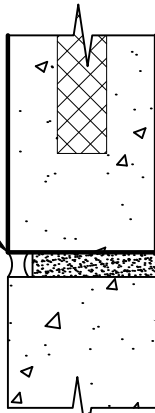
SECTION  
 1" = 1'-0"

NOTE:  
 PANEL TO FOUNDATION CNX NOT SHOWN FOR CLARITY.

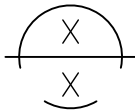
- #2  
 NON-SHRINK NON-METALIC GROUT & CAULK  
 - RECOMMENDED (COSMETIC)  
 - PREFERRED FOR EXPOSED CONDITIONS (ie. DOCKS)  
 - ESTIMATORS - ADD \$ FOR CAULK

NON-SHRINK NON-METALIC GROUT HOLD GROUT BACK 1 1/2" FROM EXT. FACE OF PANEL.

1 1/2" ±



C.I.P. WALL  
(BY OTHERS)



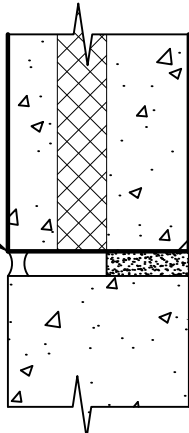
SECTION  
 1" = 1'-0"

NOTE:  
 PANEL TO FOUNDATION CNX NOT SHOWN FOR CLARITY.

- #3  
 NON-SHRINK NON-METALIC GROUT & CAULK  
 - REQUIRED FOR NON-COMPOSITE PANELS  
 - ESTIMATORS - ADD \$ FOR CAULK

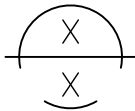
CAULK JOINT

1 1/2" ±



NON-SHRINK NON-METALIC GROUT DO NOT UNDER EXTERIOR FACE OF PANEL.

C.I.P. WALL  
(BY OTHERS)



SECTION  
 1" = 1'-0"

NOTE:  
 PANEL TO FOUNDATION CNX NOT SHOWN FOR CLARITY.