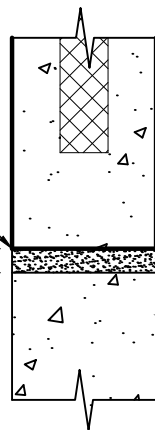


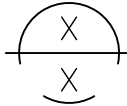
NON-SHRINK NON-METALIC GROUT STRIKE OFF FLUSH WITH FACE OF PANEL.

1 1/2" ±



C.I.P. WALL (BY OTHERS)

- #1  
NON-SHRINK NON-METALIC GROUT  
- EXT. JOINT LOOKS POOR.  
- NOT CONSISTENT COLOR



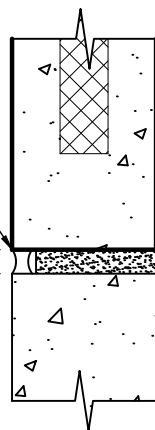
SECTION

1" = 1'-0"

NOTE:  
PANEL TO FOUNDATION CNX NOT SHOWN FOR CLARITY.

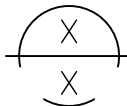
NON-SHRINK NON-METALIC GROUT HOLD GROUT BACK 1 1/2" FROM EXT. FACE OF PANEL. CAULK EXTERIOR FACE OF PANEL TO FDN.

1 1/2" ±



C.I.P. WALL (BY OTHERS)

- #2  
NON-SHRINK NON-METALIC GROUT & CAULK  
- RECOMMENDED (COSMETIC)  
- PREFERRED FOR EXPOSED CONDITIONS (ie. DOCKS)  
  
- ESTIMATORS - ADD \$ FOR CAULK



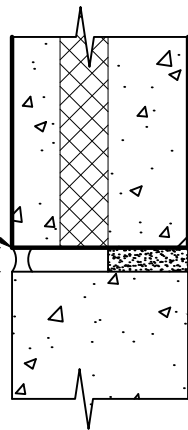
SECTION

1" = 1'-0"

NOTE:  
PANEL TO FOUNDATION CNX NOT SHOWN FOR CLARITY.

CAULK JOINT

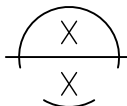
1 1/2" ±



NON-SHRINK NON-METALIC GROUT DO NOT UNDER EXTERIOR FACE OF PANEL.

C.I.P. WALL (BY OTHERS)

- #3  
NON-SHRINK NON-METALIC GROUT & CAULK  
- REQUIRED FOR NON-COMPOSITE PANELS  
  
- ESTIMATORS - ADD \$ FOR CAULK



SECTION

1" = 1'-0"

NOTE:  
PANEL TO FOUNDATION CNX NOT SHOWN FOR CLARITY.