



# 601 Bond

Grand Rapids, MI | Multifamily

## THE CHALLENGE

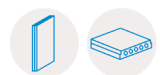
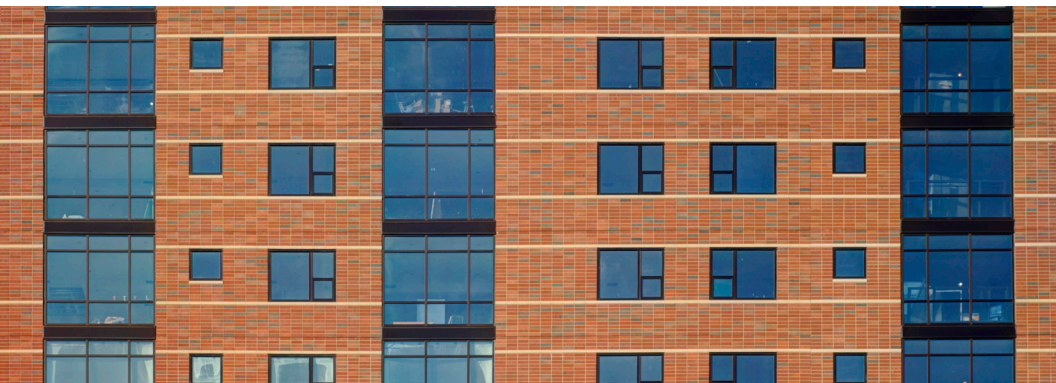
601 Bond is a sixteen story structure in downtown Grand Rapids, Michigan. Since there are many buildings downtown, the challenge was to design a building that stood out.

## THE SOLUTION

The project's exterior is a blend of precast finishes to match the surrounding area yet provide a unique element to the area. The multi-textured panels contain random patterns of exposed precast with differing finishes, while the brick is highlighted with the same mix design featuring bull noses to accentuate the exterior.

## THE RESULT

A beautiful apartment building that utilizes a combination of solid thin brick precast cladding panels and load bearing insulated multi-textured panels.



**Total Product Square Footage: 78,405**