

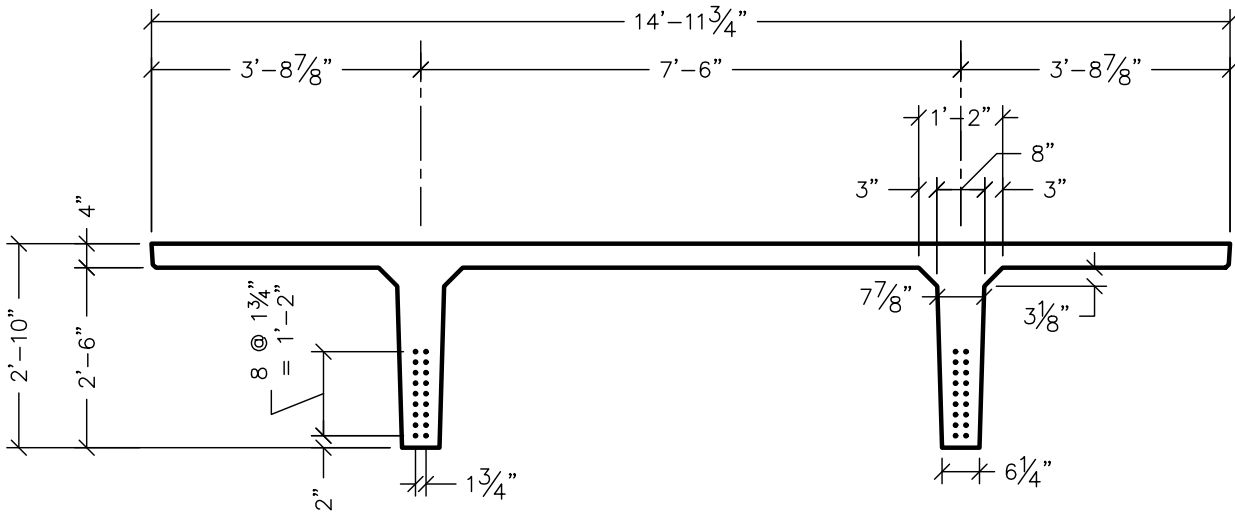
Maximum Uniformly Distributed Service Load (psf)																	
Strand pattern	Clear Span (ft)																
	40	42	44	46	48	50	52	54	56	58	60	62	64	66	68	70	72
088-S	129	110	94	80	69	56	46	36	28	21							
128-S		174	151	131	114	99	85	73	62	53	44	36	29	22			
168-S			173	162	152	139	122	107	94	82	71	62	53	45	38	31	25
208-S							127	120	112	106	97	86	75	66	57	50	42
248-S												88	83	78	73	67	59

Estimated 28-Day Camber (in.)																	
Strand pattern	Clear Span (ft)																
	40	42	44	46	48	50	52	54	56	58	60	62	64	66	68	70	72
088-S	0.40	0.40	0.40	0.40	0.40	0.40	0.30	0.30	0.20	0.20							
128-S		0.70	0.70	0.80	0.80	0.80	0.80	0.80	0.80	0.70	0.70	0.70	0.60	0.50			
168-S			1.00	1.10	1.10	1.20	1.20	1.20	1.30	1.30	1.30	1.30	1.20	1.20	1.10	1.00	1.00
208-S							1.60	1.60	1.70	1.70	1.80	1.80	1.80	1.80	1.80	1.70	1.70
248-S												2.30	2.30	2.30	2.40	2.40	2.30

$A_g = 1163 \text{ in}^2$
 $I_x = 104843 \text{ in}^4$
 $y_b = 25.94 \text{ in}$
 $w_{sw} = 1212 \text{ plf}$
 $f'_{ci} = 4000 \text{ psi}$
 $f'_c = 6000 \text{ psi}$
 Strand: $\frac{1}{2}$ " SPECIAL PULLED TO 70%

NOTES:

- TABULATED UNIFORM DISTRIBUTED LOADS IN THIS TABLE ARE BASED ON ACI 318-14/318R-14.
- ALL CALCULATED LOADS ARE CONSIDERED AS SUPERIMPOSED TOTAL LOAD BASED ON EQUAL MAGNITUDE OF DEAD AND LIVE LOAD.
- DOUBLE TEE IS $1\frac{1}{2}$ HOUR FIRE RATED PER IBC 2006. FOR HIGHER FIRE RATING OR ALTERNATE CODES, PLEASE CONTACT KP.
- CONCENTRATED LOADS ON FLANGES REQUIRE SPECIAL CONSIDERATION AND MAY INCUR A COST SURCHARGE.
- FOR SPANS OR CONDITIONS NOT COVERED BY THIS TABLE PLEASE CONTACT KP.
- SHADED LOADS REQUIRE NON-STANDARD REINFORCING AND MAY INCUR A COST SURCHARGE (88psf MAXIMUM SUPERIMPOSED LOAD FOR STD. FLANGE REINFORCING).



15DT32+2
 15' WIDE DOUBLE TEE - 32"+2" PRETOPPED
 DATE: 8/30/19

FILE NAME:

3621