

Strand Pattern	Strand Area(in ²)	Clear Span (Feet)																				
		13	14	15	16	17	18	19	20	21	22	23	24	25	26	27	28	29	30	31	32	33
8S58	0.765	378	346	319	295	274	256	232	210	191	174	159	145	134	124	114	104	94	85	77	70	63
		0.24	0.28	0.31	0.35	0.38	0.42	0.45	0.49	0.52	0.55	0.57	0.59	0.61	0.62	0.63	0.63	0.63	0.61	0.58	0.55	0.51
		-0.12	-0.15	-0.18	-0.22	-0.26	-0.30	-0.34	-0.38	-0.42	-0.46	-0.50	-0.54	-0.59	-0.63	-0.68	-0.72	-0.75	-0.78	-0.80	-0.83	-0.85
8S78	1.071	401	367	338	313	292	272	255	240	226	206	189	173	159	147	136	126	117	108	101	94	88
		0.34	0.39	0.44	0.50	0.55	0.61	0.67	0.72	0.78	0.83	0.89	0.94	0.99	1.03	1.07	1.10	1.13	1.16	1.17	1.18	1.18
		-0.13	-0.16	-0.19	-0.23	-0.27	-0.32	-0.37	-0.43	-0.49	-0.54	-0.59	-0.65	-0.70	-0.75	-0.81	-0.87	-0.93	-0.99	-1.05	-1.11	-1.17

FOR EXAMPLE: IF YOU NEED 25DL & 100 LL, LOOK FOR TABLE VALUE >125 PSF (PLANK SELF WEIGHT IS ALREADY INCLUDED)

Key

15

401	Maximum Uniformly Distributed Load (psf)
0.34	Estimated Camber at Midspan at Time of Erection (in.)
-0.13	Total Live Load Deflection at Midspan (in.)

SECTION PROPERTIES

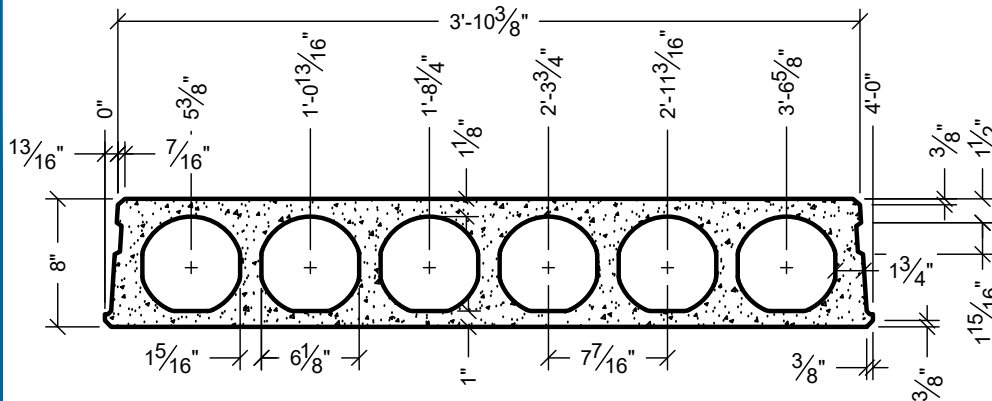
A _c	= 195.5 IN. ²
I _g	= 1586 IN. ⁴
Y _b	= 4.08 IN.
b _w	= 10.19 IN.
v/s = a/p	= 1.76
w _t	= 54 PSF
w _{COREFILL}	= 31 PLF

CONCRETE

<u>PLANK</u>	
f _{ci}	= 4000psi
f _c	= 7000psi
<u>COREFILL</u>	
f _c	= 5000psi

STRAND

f _{pu}	= 270 ksi (LOW LAX)
<u>JACKING FORCE:</u>	
TOP	= 0.60 f _{pu}
BOTTOM	= 0.70 f _{pu}



NOTES:

- TABULATED SAFE UNIFORM DISTRIBUTED LOADS IN THIS TABLE ARE BASED ON ACI 318-14.
- ALL CALCULATED LOADS ARE CONSIDERED AS SUPERIMPOSED LIVE LOAD BASED ON 1.2DL+1.6LL.
- TOPPING WEIGHT IS NOT INCLUDED IN TABULATED VALUES.
- OPENINGS THROUGH PRECAST HAVE NOT BEEN CONSIDERED.
- LOADS TO THE LEFT OF THE RED LINE ARE GOVERNED BY SHEAR CAPACITY.
- PLANK IS 1.5 HOUR FIRE RATED PER PCI MNL-124. FOR HIGHER RATINGS PLEASE CONTACT FABCON ENGINEERING.
- FOR CONDITIONS NOT SHOWN IN ABOVE TABLE PLEASE CONTACT FABCON ENGINEERING.



GRANDVILLE, MI
PLANT ONLY

8" LIGHT HOLLOWCORE
LOAD TABLE

1201