

Strand Pattern	Strand Area(in ²)	Clear Span (Feet)																									
		17	18	19	20	21	22	23	24	25	26	27	28	29	30	31	32	33	34	35	36	37	38	39	40	41	42
10S68	0.918	398	372	349	328	307	280	257	236	218	201	187	173	162	150	141	129	118	109	100	92	85	78	71	65		
		0.33	0.36	0.39	0.42	0.46	0.49	0.52	0.55	0.57	0.60	0.62	0.63	0.65	0.66	0.66	0.66	0.66	0.64	0.62	0.60	0.56	0.52	0.47	0.40		
		-0.19	-0.22	-0.26	-0.30	-0.34	-0.38	-0.41	-0.45	-0.49	-0.53	-0.57	-0.61	-0.66	-0.70	-0.75	-0.78	-0.81	-0.84	-0.86	-0.89	-0.91	-0.93	-0.95	-0.96		
10S88	1.224	421	394	369	347	328	310	293	274	253	234	217	202	188	175	163	153	143	134	126	119	112	105	99	93	89	83
		0.44	0.49	0.54	0.59	0.64	0.68	0.73	0.78	0.83	0.87	0.92	0.96	1.00	1.03	1.06	1.09	1.11	1.13	1.14	1.15	1.15	1.14	1.12	1.09	1.06	1.00
		-0.20	-0.24	-0.28	-0.32	-0.37	-0.42	-0.47	-0.52	-0.57	-0.62	-0.66	-0.71	-0.76	-0.82	0.87	-0.92	-0.98	-1.03	-1.09	-1.15	-1.20	-1.27	-1.32	-1.38	-1.44	-1.48
10S108	1.530	445	416	390	367	346	327	310	295	280	262	243	226	211	197	184	172	162	152	143	134	126	119	113	106	101	95
		0.56	0.62	0.68	0.74	0.81	0.88	0.94	1.01	1.08	1.14	1.21	1.27	1.33	1.39	1.45	1.50	1.55	1.60	1.63	1.67	1.70	1.72	1.73	1.74	1.74	1.73
		-0.21	-0.25	-0.29	-0.34	-0.39	-0.44	-0.50	-0.56	-0.63	-0.69	-0.75	-0.80	-0.86	-0.92	-0.98	-1.04	-1.10	-1.17	-1.23	-1.30	-1.37	-1.43	-1.50	-1.57	-1.64	-1.70

FOR EXAMPLE: IF YOU NEED 25DL & 100 LL, LOOK FOR TABLE VALUE >125 PSF (PLANK SELF WEIGHT IS ALREADY INCLUDED)

Key

17	
445	Maximum Uniformly Distributed Load (psf)
0.56	Estimated Camber at Midspan at Time of Erection (in.)
-0.21	Total Live Load Deflection at Midspan (in.)

SECTION PROPERTIES

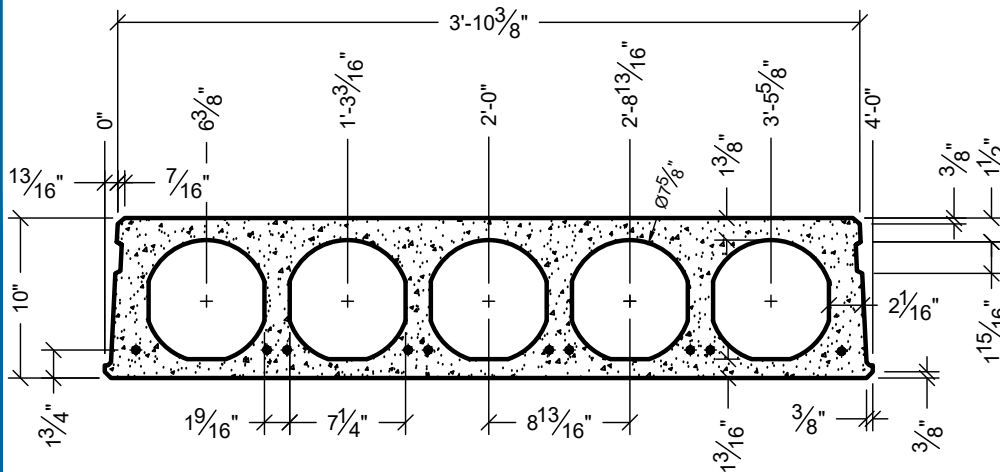
A_c	= 244 IN. ²
I_g	= 3080 IN. ⁴
Y_b	= 5.1 IN.
b_w	= 10.63 IN.
$v/s = a/p$	= 2.10
w_t	= 67 PSF
$w_{COREFILL}$	= 47 PLF

CONCRETE

PLANK
f_{ci} = 4000psi
f_c = 7000psi
COREFILL
f_c = 5000psi

STRAND

f_{pu} = 270 ksi (LOW LAX)
JACKING FORCE:
TOP = 0.60 f_{pu}
BOTTOM = 0.70 f_{pu}



NOTES:

- TABULATED SAFE UNIFORM DISTRIBUTED LOADS IN THIS TABLE ARE BASED ON ACI 318-14.
- ALL CALCULATED LOADS ARE CONSIDERED AS SUPERIMPOSED LIVE LOAD BASED ON 1.2DL+1.6LL.
- TOPPING WEIGHT IS NOT INCLUDED IN TABULATED VALUES.
- OPENINGS THROUGH PRECAST HAVE NOT BEEN CONSIDERED.
- LOADS TO THE LEFT OF THE RED LINE ARE GOVERNED BY SHEAR CAPACITY.
- PLANK IS 1.5 HOUR FIRE RATED PER PCI MNL-124. FOR HIGHER RATINGS PLEASE CONTACT FABCON ENGINEERING.
- FOR CONDITIONS NOT SHOWN IN ABOVE TABLE PLEASE CONTACT FABCON ENGINEERING.



**GRANDVILLE, MI
PLANT ONLY**

**10" LIGHT HOLLOWCORE
LOAD TABLE**

1301