

Strand Pattern	Strand Area(in ²)	Clear Span (Feet)																									
		17	18	19	20	21	22	23	24	25	26	27	28	29	30	31	32	33	34	35	36	37	38	39	40	41	42
10HS68	0.918	492	443	401	365	333	305	281	261	237	215	195	178	162	148	135	124	113	104	95	87	79	72	66	60		
		0.32	0.35	0.38	0.41	0.44	0.47	0.50	0.52	0.55	0.57	0.58	0.59	0.60	0.60	0.60	0.59	0.57	0.55	0.52	0.48	0.43	0.37	0.30	0.22		
		-0.24	-0.27	-0.30	-0.34	-0.37	-0.41	-0.45	-0.50	-0.53	-0.57	-0.60	-0.63	-0.66	-0.69	-0.72	-0.75	-0.77	-0.80	-0.82	-0.84	-0.86	-0.87	-0.88	-0.89		
10HS88	1.224	564	507	459	417	381	349	321	296	275	254	237	221	207	193	182	170	157	144	133	122	112	103	95	87	80	73
		0.44	0.49	0.53	0.58	0.63	0.67	0.72	0.76	0.81	0.85	0.89	0.92	0.95	0.98	1.01	1.03	1.04	1.05	1.05	1.04	1.02	0.99	0.96	0.91	0.85	0.78
		-0.27	-0.31	-0.34	-0.38	-0.43	-0.47	-0.52	-0.57	-0.62	-0.67	-0.73	-0.78	-0.84	-0.90	-0.97	-1.03	-1.07	-1.11	-1.15	-1.18	-1.21	-1.24	-1.26	-1.28	-1.30	-1.31
10HS108	1.530	593	555	511	464	424	389	357	330	305	283	263	245	229	214	201	189	177	168	158	149	137	127	118	109	101	93
		0.55	0.61	0.68	0.74	0.80	0.87	0.93	0.99	1.06	1.12	1.18	1.24	1.29	1.34	1.39	1.44	1.48	1.51	1.54	1.56	1.58	1.59	1.59	1.58	1.55	1.52
		-0.29	-0.34	-0.38	-0.43	-0.48	-0.52	-0.58	-0.63	-0.69	-0.74	-0.81	-0.87	-0.93	-1.00	-1.07	-1.14	-1.21	-1.29	-1.36	-1.44	-1.48	-1.53	-1.57	-1.61	1.64	-1.68

FOR EXAMPLE: IF YOU NEED 25DL & 100 LL, LOOK FOR TABLE VALUE >125 PSF (PLANK SELF WEIGHT IS ALREADY INCLUDED)

Key
17

- 593 Maximum Uniformly Distributed Load (psf)
- 0.55 Estimated Camber at Midspan at Time of Erection (in.)
- 0.29 Total Live Load Deflection at Midspan (in.)

SECTION PROPERTIES

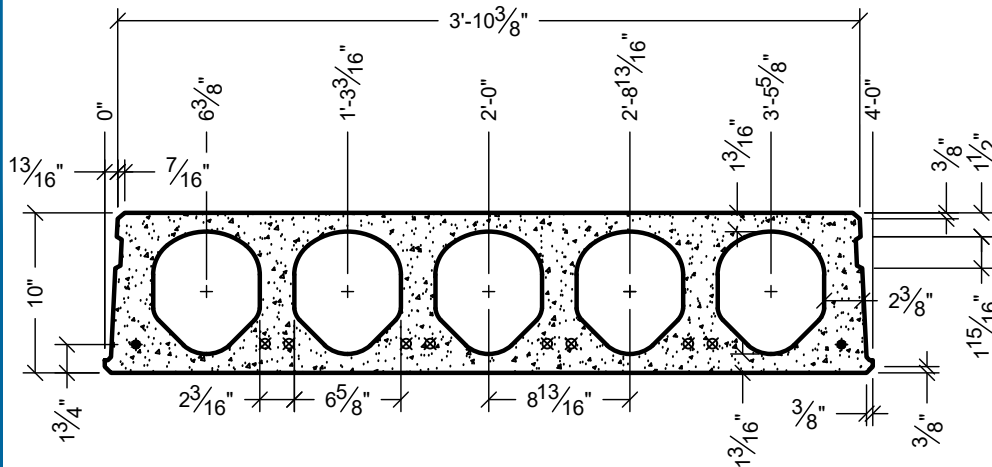
- A_c = 263.6 IN.²
- I_g = 3284 IN.⁴
- Y_b = 4.83 IN.
- b_w = 13.56 IN.
- v/s = a/p = 2.30
- w_t = 72 PSF
- W_{COREFILL} = 43 PLF

CONCRETE

- PLANK
- f_{ci} = 4000psi
- f_c = 7000psi
- COREFILL
- f_c = 5000psi

STRAND

- f_{pu} = 270 ksi (LOW LAX)
- JACKING FORCE:
- TOP = 0.60 f_{pu}
- BOTTOM = 0.70 f_{pu}



NOTES:

1. TABULATED SAFE UNIFORM DISTRIBUTED LOADS IN THIS TABLE ARE BASED ON ACI 318-14.
2. ALL CALCULATED LOADS ARE CONSIDERED AS SUPERIMPOSED LIVE LOAD BASED ON 1.2DL+1.6LL.
3. TOPPING WEIGHT IS NOT INCLUDED IN TABULATED VALUES.
4. OPENINGS THROUGH PRECAST HAVE NOT BEEN CONSIDERED.
5. LOADS TO THE LEFT OF THE RED LINE ARE GOVERNED BY SHEAR CAPACITY.
6. PLANK IS 1.5 HOUR FIRE RATED PER PCI MNL-124. FOR HIGHER RATINGS PLEASE CONTACT FABCON ENGINEERING.
7. FOR CONDITIONS NOT SHOWN IN ABOVE TABLE PLEASE CONTACT FABCON ENGINEERING.



GRANDVILLE, MI
PLANT ONLY

10" HEAVY HOLLOWCORE
LOAD TABLE

1331