

Strand Pattern	Strand Area(in ²)	Clear Span (Feet)																									
		20	21	22	23	24	25	26	27	28	29	30	31	32	33	34	35	36	37	38	39	40	41	42	43	44	45
12S68	0.918	424	401	371	341	314	290	269	249	232	216	199	183	168	155	142	131	121	112	103	95	88	81	74	68	63	
		0.33	0.36	0.39	0.41	0.44	0.46	0.48	0.50	0.52	0.54	0.55	0.56	0.57	0.57	0.56	0.54	0.52	0.52	0.49	0.45	0.41	0.36	0.31	0.24		
		-0.23	-0.27	-0.30	-0.33	-0.36	-0.39	-0.42	-0.45	-0.49	-0.52	-0.55	-0.58	-0.60	-0.63	-0.65	-0.67	-0.69	-0.72	-0.73	-0.75	-0.77	-0.78	-0.79	-0.80	-0.81	-0.81
12S88	1.224	449	424	401	380	361	335	310	288	268	250	234	219	205	192	181	170	160	151	142	135	128	120	114	106	99	92
		0.46	0.50	0.54	0.58	0.62	0.66	0.70	0.74	0.77	0.81	0.84	0.87	0.90	0.92	0.95	0.96	0.98	0.99	0.99	0.99	0.98	0.97	0.95	0.92	0.89	0.84
		-0.25	-0.28	-0.32	-0.36	-0.41	-0.45	-0.48	-0.52	-0.56	-0.60	-0.65	-0.69	-0.73	-0.78	-0.82	-0.87	-0.92	-0.97	-1.01	-1.07	-1.12	-1.16	-1.21	-1.24	-1.27	-1.29
12S108	1.530	474	447	423	401	381	363	346	323	301	280	262	245	230	216	203	192	181	170	161	152	144	136	129	123	116	110
		0.58	0.63	0.69	0.74	0.80	0.85	0.91	0.96	1.01	1.07	1.12	1.17	1.22	1.26	1.30	1.34	1.38	1.41	1.44	1.47	1.49	1.50	1.51	1.51	1.51	1.49
		-0.26	-0.30	-0.34	-0.38	-0.43	-0.48	-0.54	-0.59	-0.63	-0.68	-0.73	-0.77	-0.82	-0.88	-0.93	-0.98	-1.04	-1.09	-1.15	-1.20	-1.26	-1.32	-1.38	-1.43	-1.49	-1.55

FOR EXAMPLE: IF YOU NEED 25DL & 100 LL, LOOK FOR TABLE VALUE >125 PSF (PLANK SELF WEIGHT IS ALREADY INCLUDED)

Key

20	
474	Maximum Uniformly Distributed Load (psf)
0.58	Estimated Camber at Midspan at Time of Erection (in.)
-0.26	Total Live Load Deflection at Midspan (in.)

SECTION PROPERTIES

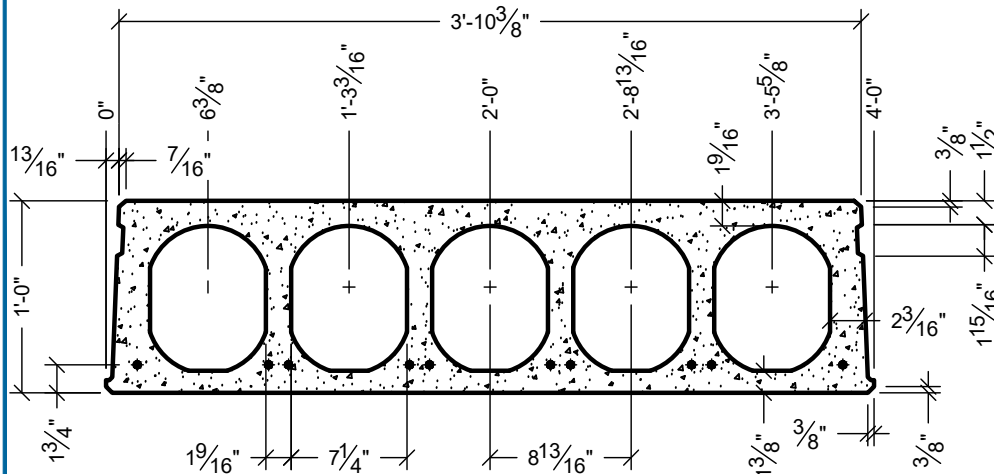
A _c	= 278.6 IN. ²
I _g	= 5196 IN. ⁴
Y _b	= 6.09 IN.
b _w	= 10.62 IN.
v/s = a/p	= 2.35
w _t	= 77 PSF
W _{COREFILL}	= 59 PLF

CONCRETE

PLANK	
f _{ci}	= 4000psi
f _c	= 7000psi
COREFILL	
f _c	= 5000psi

STRAND

f _{pu}	= 270 ksi (LOW LAX)
JACKING FORCE:	
TOP	= 0.60 f _{pu}
BOTTOM	= 0.70 f _{pu}



NOTES:

- TABULATED SAFE UNIFORM DISTRIBUTED LOADS IN THIS TABLE ARE BASED ON ACI 318-14.
- ALL CALCULATED LOADS ARE CONSIDERED AS SUPERIMPOSED LIVE LOAD BASED ON 1.2DL+1.6LL.
- TOPPING WEIGHT IS NOT INCLUDED IN TABULATED VALUES.
- OPENINGS THROUGH PRECAST HAVE NOT BEEN CONSIDERED.
- LOADS TO THE LEFT OF THE RED LINE ARE GOVERNED BY SHEAR CAPACITY.
- PLANK IS 1.5 HOUR FIRE RATED PER PCI MNL-124. FOR HIGHER RATINGS PLEASE CONTACT FABCON ENGINEERING.
- FOR CONDITIONS NOT SHOWN IN ABOVE TABLE PLEASE CONTACT FABCON ENGINEERING.



**GRANDVILLE, MI
PLANT ONLY**

**12" LIGHT (5 CORE) HOLLOWCORE
LOAD TABLE**

1401