

Strand Pattern	Strand Area(in ²)	Clear Span (Feet)																									
		20	21	22	23	24	25	26	27	28	29	30	31	32	33	34	35	36	37	38	39	40	41	42	43	44	45
12HS4.6(28)	1.174	531	485	445	409	378	351	325	303	282	265	247	230	212	195	181	167	154	143	132	122	113	105	97	89	81	74
		0.39	0.42	0.45	0.48	0.51	0.54	0.56	0.59	0.61	0.63	0.64	0.66	0.67	0.67	0.67	0.67	0.65	0.64	0.62	0.58	0.55	0.50	0.45	0.38	0.31	0.23
		-0.29	-0.32	-0.36	-0.39	-0.43	-0.47	-0.51	-0.55	-0.59	-0.64	-0.68	-0.72	-0.76	-0.79	-0.82	-0.85	-0.88	-0.91	-0.94	-0.96	-0.99	-1.01	-1.02	-1.04	-1.04	-1.03
12HS4.6(68)	1.786	655	598	549	505	466	432	401	373	348	325	304	286	268	253	238	224	213	201	190	181	171	162	151	141	132	123
		0.63	0.68	0.74	0.80	0.85	0.91	0.97	1.03	1.08	1.14	1.19	1.24	1.29	1.33	1.38	1.41	1.45	1.48	1.50	1.52	1.54	1.55	1.55	1.54	1.53	1.50
		-0.36	-0.40	-0.44	-0.48	-0.53	-0.57	-0.62	-0.68	-0.73	-0.78	-0.84	-0.90	-0.96	-1.02	-1.08	-1.15	-1.22	-1.28	-1.35	-1.42	-1.49	-1.56	-1.60	-1.64	-1.68	-1.71
12HS8.6(28)	2.042	698	637	584	538	497	460	427	397	371	347	325	304	286	269	254	239	226	214	203	193	183	173	166	157	149	139
		0.72	0.79	0.85	0.92	0.99	1.06	1.13	1.20	1.26	1.33	1.40	1.46	1.53	1.59	1.65	1.70	1.75	1.80	1.84	1.88	1.92	1.94	1.96	1.98	1.98	1.98
		-0.38	-0.42	-0.47	-0.51	-0.56	-0.61	-0.66	-0.72	-0.78	-0.84	-0.90	-0.96	-1.02	-1.09	-1.16	-1.22	-1.29	-1.37	-1.44	-1.52	-1.59	-1.67	-1.75	-1.83	-1.90	-1.94

FOR EXAMPLE: IF YOU NEED 25DL & 100 LL, LOOK FOR TABLE VALUE >125 PSF (PLANK SELF WEIGHT IS ALREADY INCLUDED)

Key

20	Maximum Uniformly Distributed Load (psf)
698	Estimated Camber at Midspan at Time of Erection (in.)
0.72	Total Live Load Deflection at Midspan (in.)

SECTION PROPERTIES

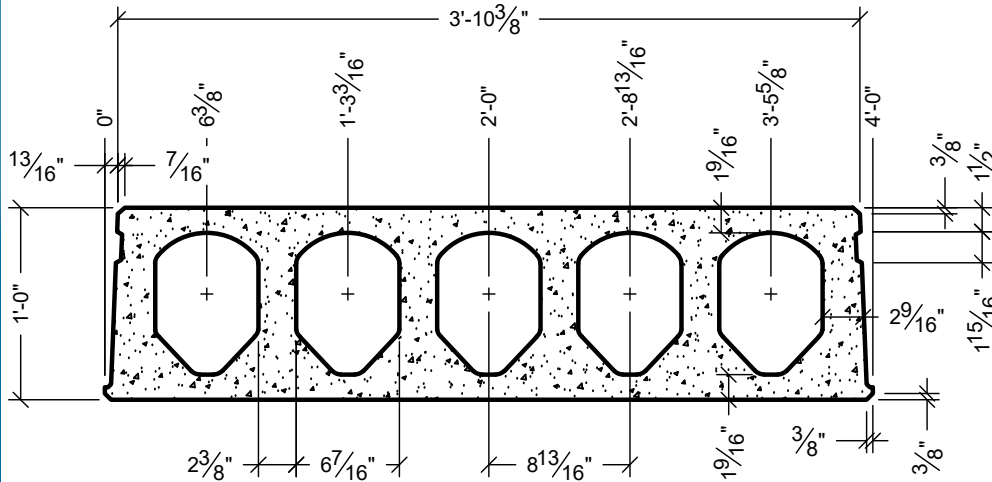
A_c	= 324.0 IN. ²
I_g	= 5209 IN. ⁴
Y_b	= 5.78 IN.
b_w	= 14.56 IN.
$v/s = a/p$	= 2.73
w_t	= 88 PSF
$W_{COREFILL}$	= 50 PLF

CONCRETE

PLANK
f_{ci} = 5000psi
f_c = 9000psi
COREFILL
f_c = 5000psi

STRAND

f_{pu} = 270 ksi (LOW LAX)
JACKING FORCE:
TOP = 0.60 f_{pu}
BOTTOM = 0.70 f_{pu}



NOTES:

- TABULATED SAFE UNIFORM DISTRIBUTED LOADS IN THIS TABLE ARE BASED ON ACI 318-14.
- ALL CALCULATED LOADS ARE CONSIDERED AS SUPERIMPOSED LIVE LOAD BASED ON 1.2DL+1.6LL.
- TOPPING WEIGHT IS NOT INCLUDED IN TABULATED VALUES.
- OPENINGS THROUGH PRECAST HAVE NOT BEEN CONSIDERED.
- LOADS TO THE LEFT OF THE RED LINE ARE GOVERNED BY SHEAR CAPACITY.
- PLANK IS 1.5 HOUR FIRE RATED PER PCI MNL-124. FOR HIGHER RATINGS PLEASE CONTACT FABCON ENGINEERING.
- FOR CONDITIONS NOT SHOWN IN ABOVE TABLE PLEASE CONTACT FABCON ENGINEERING.



**GRANDVILLE, MI
PLANT ONLY**

**12" HEAVY (5 CORE) HOLLOWCORE
LOAD TABLE**

1431