

Strand Pattern	Strand Area(in ²)	Clear Span (Feet)																															
		30	31	32	33	34	35	36	37	38	39	40	41	42	43	44	45	46	47	48	49	50	51	52	53	54	55	56	57	58	59	60	
16S88	1.224	349	327	306	288	271	256	241	228	215	204	194	181	169	158	148	138	129	121	113	105	98	92	85	80	74	69	64					
		0.62	0.64	0.67	0.69	0.71	0.73	0.75	0.77	0.78	0.79	0.79	0.79	0.80	0.79	0.79	0.78	0.76	0.74	0.72	0.69	0.65	0.61	0.56	0.50	0.44	0.37	0.29	0.20				
		-0.44	-0.47	-0.50	-0.53	-0.57	-0.60	-0.63	-0.67	-0.70	-0.74	-0.78	-0.80	-0.82	-0.84	-0.87	-0.89	-0.90	-0.92	-0.94	-0.95	-0.96	-0.97	-0.98	-0.98	-0.98	-0.99	-0.99					
16S4.6(68)	1.786	409	384	360	339	319	301	285	269	255	241	229	217	206	196	186	177	169	161	154	147	140	134	128	123	116	109	102	96	90	84	79	
		0.91	0.95	1.00	1.04	1.09	1.13	1.17	1.21	1.25	1.28	1.32	1.35	1.38	1.40	1.42	1.44	1.45	1.46	1.46	1.46	1.46	1.46	1.44	1.43	1.40	1.37	1.32	1.28	1.22	1.15	1.08	1.00
		-0.52	-0.55	-0.59	-0.63	-0.67	-0.71	-0.75	-0.79	-0.83	-0.87	-0.92	-0.96	-1.00	-1.05	-1.09	-1.14	-1.19	-1.23	-1.28	-1.33	-1.37	-1.42	-1.46	-1.52	-1.54	-1.56	-1.57	-1.59	-1.59	-1.60	-1.60	-1.60

FOR EXAMPLE: IF YOU NEED 25DL & 100 LL, LOOK FOR TABLE VALUE >125 PSF (PLANK SELF WEIGHT IS ALREADY INCLUDED)

Key

30

- 409 Maximum Uniformly Distributed Load (psf)
- 0.91 Estimated Camber at Midspan at Time of Erection (in.)
- 0.52 Total Live Load Deflection at Midspan (in.)

SECTION PROPERTIES

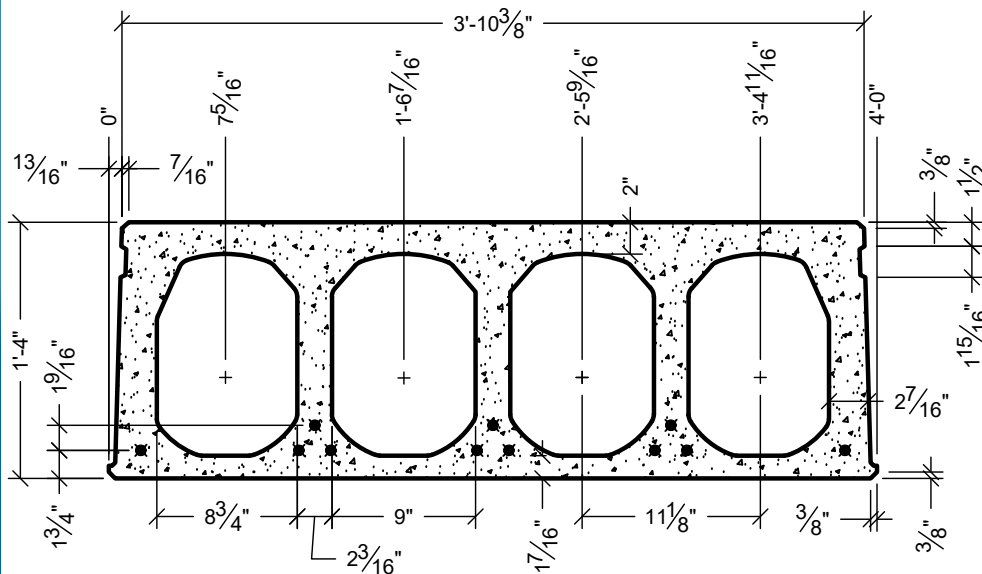
- A_c = 353.2 IN.²
- I_g = 11401 IN.⁴
- Y_b = 8.3 IN.
- b_w = 11.30 IN.
- v/s = a/p = 2.79
- w_t = 97 PSF
- w_{COREFILL} = 107 PLF

CONCRETE

- PLANK
- f_{ci} = 5000psi
- f_c = 9000psi
- COREFILL
- f_c = 5000psi

STRAND

- f_{pu} = 270 ksi (LOW LAX)
- JACKING FORCE:
- TOP = 0.60 f_{pu}
- BOTTOM = 0.70 f_{pu}



NOTES:

1. TABULATED SAFE UNIFORM DISTRIBUTED LOADS IN THIS TABLE ARE BASED ON ACI 318-14.
2. ALL CALCULATED LOADS ARE CONSIDERED AS SUPERIMPOSED LIVE LOAD BASED ON 1.2DL+1.6LL.
3. TOPPING WEIGHT IS NOT INCLUDED IN TABULATED VALUES.
4. OPENINGS THROUGH PRECAST HAVE NOT BEEN CONSIDERED.
5. LOADS TO THE LEFT OF THE red LINE ARE GOVERNED BY SHEAR CAPACITY.
6. PLANK IS 1.5 HOUR FIRE RATED PER PCI MNL-124. FOR HIGHER RATINGS PLEASE CONTACT FABCON ENGINEERING.
7. FOR LONGER SPANS OR CONDITIONS NOT SHOWN IN ABOVE TABLE PLEASE CONTACT FABCON ENGINEERING.

